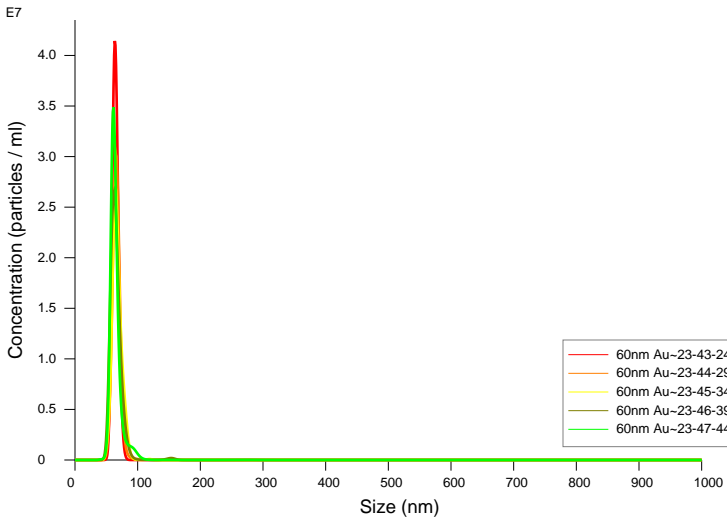
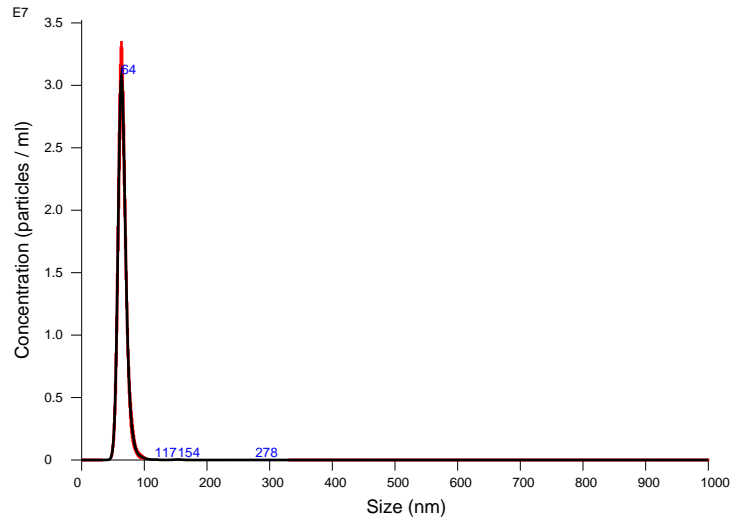


60nm Au_round3_MP_2019-04-03 23-42-42



FTLA Concentration / Size graph for Experiment:
60nm Au_round3_MP_2019-04-03 23-42-42



Averaged FTLA Concentration / Size for Experiment:
60nm Au_round3_MP_2019-04-03 23-42-42
Error bars indicate + / - 1 standard error of the mean

Included Files

60nm Au_round3_MP_2019-04-03 23-43-24
60nm Au_round3_MP_2019-04-03 23-44-29
60nm Au_round3_MP_2019-04-03 23-45-34
60nm Au_round3_MP_2019-04-03 23-46-39
60nm Au_round3_MP_2019-04-03 23-47-44

Details

NTA Version: NTA 3.4 Build 3.4.003
Script Used: [Modified] SOP Standard Measurement 11-21-35PM 03~
Time Captured: 23:42:42 03/04/2019
Operator:
Pre-treatment:
Sample Name:
Diluent:
Remarks:

Capture Settings

Camera Type: sCMOS
Laser Type: Blue405
Camera Level: 11
Slider Shutter: 890
Slider Gain: 125
FPS: 25.0
Number of Frames: 1498
Temperature: 23.8 - 24.0 °C
Viscosity: (Water) 0.909 - 0.914 cP
Dilution factor: Dilution not recorded
Syringe Pump Speed: 50

Analysis Settings

Detect Threshold: 5
Blur Size: Auto
Max Jump Distance: Auto: 20.0 - 20.8 pix

Results

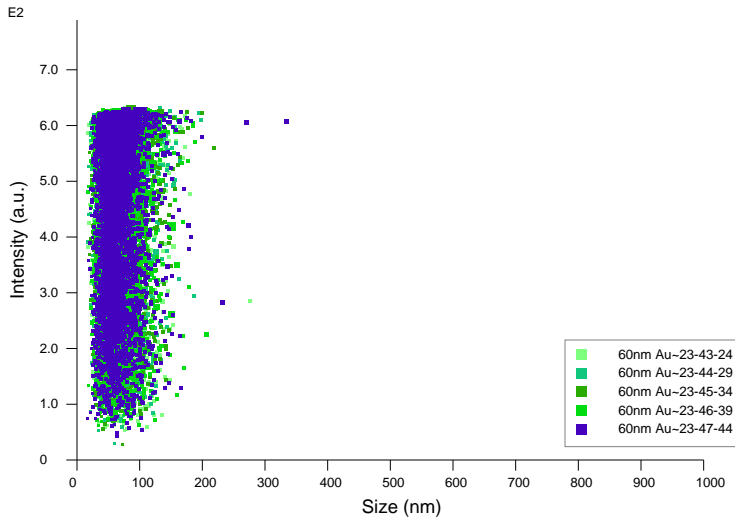
Stats: Merged Data

Mean: 65.6 nm
Mode: 63.5 nm
SD: 8.9 nm
D10: 57.2 nm
D50: 64.5 nm
D90: 74.2 nm

Stats: Mean +/- Standard Error

Mean: 65.6 +/- 0.5 nm
Mode: 63.5 +/- 0.8 nm
SD: 8.6 +/- 1.1 nm
D10: 57.4 +/- 0.6 nm
D50: 64.6 +/- 0.6 nm
D90: 74.3 +/- 1.1 nm
Concentration (Upgrade): 4.68e+08 +/- 1.30e+07 particles/ml
67.0 +/- 2.0 particles/frame
59.6 +/- 1.5 centres/frame

60nm Au_round3_MP_2019-04-03 23-42-42



Intensity / Size graph for Experiment:

60nm Au_round3_MP_2019-04-03 23-42-42

Script Used: (Full Text):

[Modified] SOP Standard Measurement 11-21-35PM 03Apr2019.txt